

**Tekomar**

TURBO  
CUT



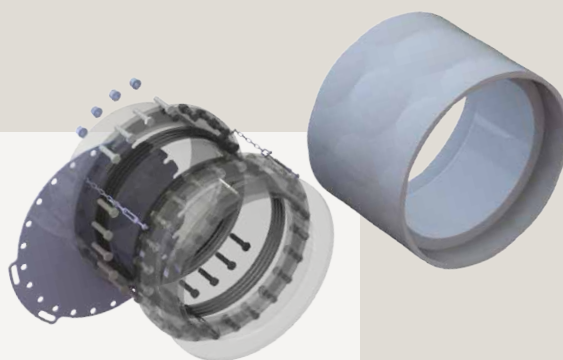
## TEKOMAR TURBOCUT

# Simply affordable

Running a diesel engine on **low load** means running it outside of the optimum range.

Tekomar TURBOCUT reduces the **fuel consumption** and improves **reliability** of engines while slow steaming. A low cost option that is **flexible to operate**.

- Change-over in 1 hour
- High-grade, lightweight plates
- Installation in normal service



For further information: [www.tekomar.com](http://www.tekomar.com)

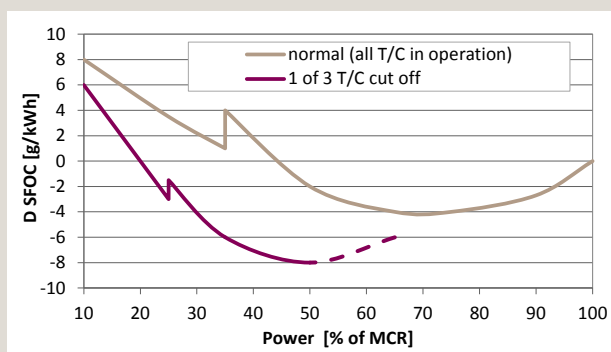
## TEKOMAR TURBOCUT

The most efficient way for part load optimization of 2-stroke engines is by turbocharger cut out. Tekomar TURBOCUT has shorter deliver time and lower initial costs with the same operational benefits as any other flexible concept.

### CONCEPT

By cutting one turbocharger off, the boost and efficiency of the remaining turbocharger(s) is increased which leads to considerably lower fuel consumption.

With Tekomar TURBOCUT, changing over from „cut off“ to „in operation“ is achieved in 1 hour. The concept is simple, flexible and very reliable even after long-term operation.



*Typical recommended load range (power % of MCR) with one of the turbochargers cut off:*

- Engine with 2 T/C: 10% – 40%
- Engine with 3 T/C: 10% – 60%
- Engine with 4 T/C: 10% – 70%

Quick locking nuts allow that the compensator can be loosened with half a turn one each bolt. When the compensator is compressed (by means of turn-buckles) the lightweight blind plate can be inserted in the free space.



*Changing-over achieved within one hour.*

The optional TURBOCUT Monitoring provides status indication in ECR and possible output signal to AMS.

### INSTALLATION

Delivered as do-it-yourself kit including all materials and installation-/commissioning guideline with new operational limits, Tekomar TURBOCUT can be installed in normal service. Optionally, Tekomar can offer the complete modification work.

Tekomar TURBOCUT has DNV-GL principal approval.